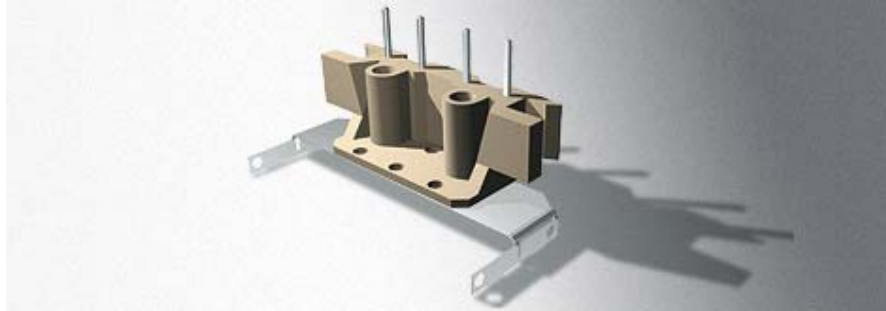




Continuous Insert Moulding



Example of product: Connecting Block

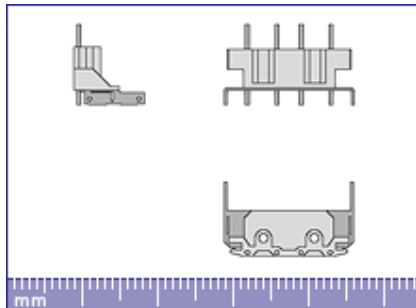
The pins of the connecting block are used to automatically wind the bobbin wires.

The strip is continuously fed. The wires are also fed from the reel and cut within the injection tool.

In the automatic stamping press, the parts are separated from the insert moulded strip, then sorted and stored by cavities.

The complete production process is monitored by cameras.

Technical Data



Plastic	LCP - Vectra E130
Strip	X5 Cr Ni 18-12 Steel-chrome-nickel alloy
Wire	Cu Sn6 square 0.38 x 0.38 solder-coated
Injection moulding tool	8 cavities
Type of gating	Hot runner via manifold nozzles with film gate
Stamping tool	Hard-metal

A. MAIER Präzision GmbH
Gewerbehallestraße 1 - 3
78112 St. Georgen / Schwarzwald
Germany

Phone: +49 (0) 77 24 / 88 03-0
Fax: +49 (0) 77 24 / 88 03-40
E-Mail: info@a-maier.de
Net: www.a-maier.de